



ISO 13385-1

0,01 mm /
0,0005 in

LCD, 11 mm



Fixed zero

mm / in
conversion
 $L \leq 100 \text{ mm}: 30 \mu\text{m}$
 $100 < L \leq 600 \text{ mm}: 40 \mu\text{m}$
 $600 < L \leq 1000 \text{ mm}: 50 \mu\text{m}$
10 μm Scale with incre-
mental divisions,
inductive

2,5 m/s



TLC Connectivity



Stainless steel

3V lithium battery,
CR2032

12.000 hours



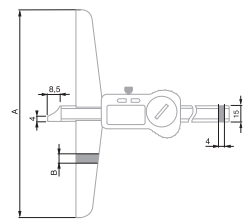
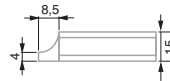
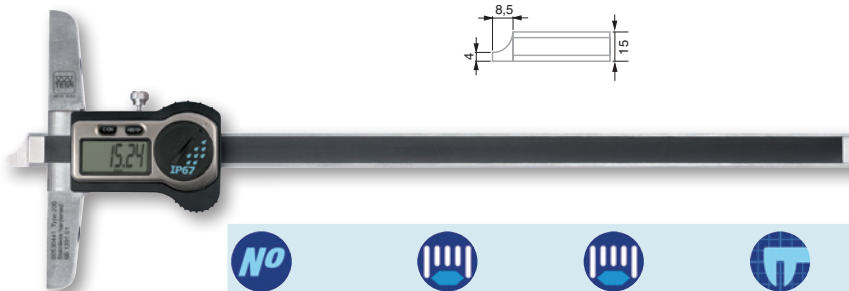
Standby mode after 10 minutes, instru-
ment retains the zero position. Auto-
matic shut off after 2 hours, instru-
ment retains the zero in ABS mode, but the
zero must be reset if the instrument is in
DIFF mode.

1907/2006/CE
2004/108/CE
2002/96/CEInspection report
with declaration
of conformity

DIGITAL DEPTH CALIPERS

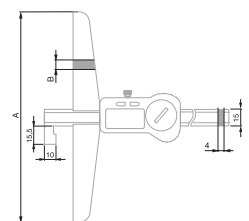
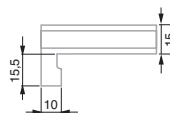
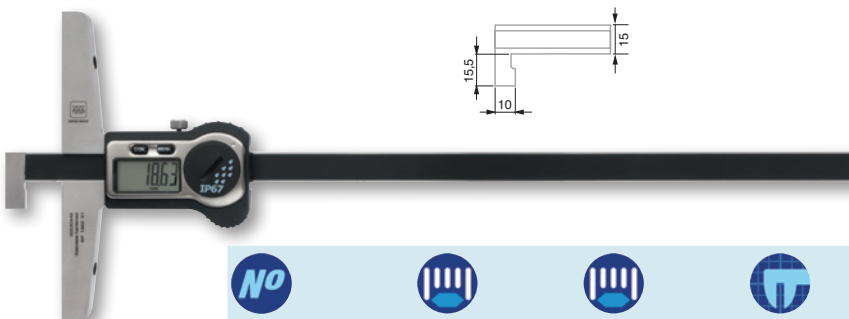
The range of IP67 calipers guarantees the highest level of protection against the penetration of dust and liquids. The TLC (TESA Link Connector) system built into all the TWIN-CAL calipers provides the connection of these instruments to a PC for the easy acquisition of measurement data. The unique display housing, protected by a steel plate surrounded with a rubber seal guarantees durability and offers fine sensitivity during measurement.

TWIN-CAL IP67 – Models with Short Cut Measuring Face



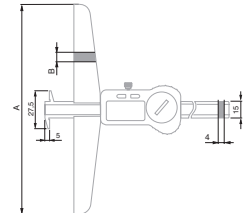
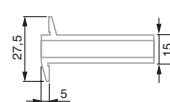
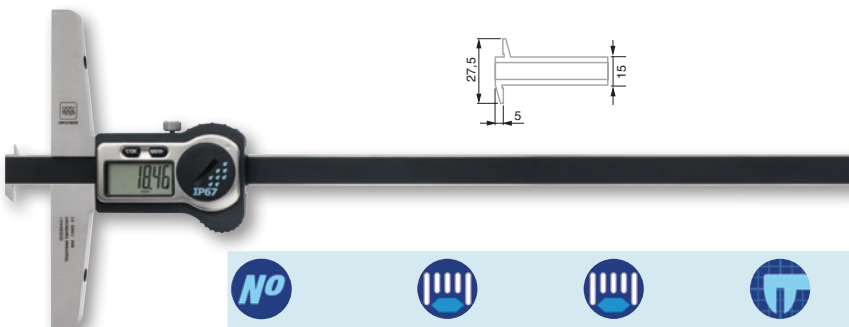
No				
00530441	200	8	100	8
00530442	250	10	100	8
00530443	300	12	150	8
00530444	500	20	150	8

TWIN-CAL IP67 – Models with One Fixed Measuring Jaw



No				
00530445	300	12	150	8
00530446	500	20	150	8

TWIN-CAL IP67 – Models with Two Fixed Measuring Jaws



No				
00530447	300	12	150	8